

SKID-STEER ROLLERS



Quality Survives



VIBRATORY ROLLERS FOR SKID-STEER LOADERS

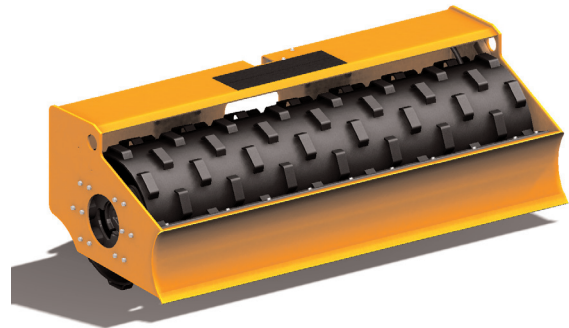
MBW's Vibratory Roller Attachments for Skid-Steer Loaders are high performance, low cost, compactors. These rollers can be attached to any skid-steer brand. ATS (smooth drum) models deliver high density compaction on all essentially granular soils. ATP (padded drum) models provide excellent results on the full range of soils including cohesive materials.



A number of unique features separate MBW rollers from other brands. All ATS and ATP models come with an integral and patented knockdown blade. Blade height is adjusted by the skid-steer controls. The blade enables users to increase productivity as well as better manage lift depth for optimal compaction results.

All ATS and ATP models feature a patented exciter system. An advanced exciter shaft design reduces shaft deflection by approximately 70% and reduces system heat by up to 100 degrees. This is an important advancement in the state-of-the-art and significantly improves service life of bearings, seals and lubricants.

There are no grease fittings on ATS or ATP models. Hydraulically powered exciter systems are lubricated by



an oil mist design. Vibrating drums are nicely isolated from the roller frame and transference of vibration to the skid-steer is minimal. A flow control valve prevents over speeding of the exciter shaft.

All models are provided with a standard quick-attach system.

MBW's range of Vibratory Rollers for Skid-Steer Loader offers contractors and rental yards a cost effective, high performance alternative to much more costly self-contained compaction equipment.

U.S. & International Patents

SPECS	ATS73	ATP73	ATS84	ATP84
Amplitude	.05 in (1.3 mm)		.05 in (1.3 mm)	
Centrifugal Force**	8850 lbs (39.4 kN)		9765 lbs (43.4 kN)	
Exciter Speed	3000 rpm		3000 rpm	
Weight	2070 lbs (939 kg)	2210 lbs (1002 kg)	2300 lbs (1043 kg)	2450 lbs (1111 kg)
Length	43.3 in (110 cm)		43.3 in (110 cm)	
Height	29 in (74 cm)	30 in (76 cm)	29 in (74 cm)	30 in (76 cm)
Working Width	73 in (185 cm)		84 in (213 cm)	
Flow Requirement	10-50 gpm (38-189 Lpm)		10-50 gpm (38-189 Lpm)	
Pressure Requirement	1500-3000 psi (103-207 Bar)		1500-3000 psi (103-207 Bar)	
Hydraulic Connection	1/2" Flat Face Quick Coupling		1/2" Flat Face Quick Coupling	

** Centrifugal Force is not a measure of compaction performance.

() Metric Measurements. Specifications subject to change without notice.

AUTHORIZED DISTRIBUTOR



MBW Inc.
250 Hartford Road • P.O. Box 440
Slinger, Wisconsin • 53086-0440 • USA
Ph: 800-678-5237 or 262-644-5234 • Fax: 262-644-5169
E-mail: mbw@mbw.com • Website: www.mbw.com

MBW UK Ltd.
Units 2 & 3 Cochrane Street • Bolton BL3 6BN • England UK
Ph: 44 (0) 1204 387784 • Fax: 44 (0) 1204 387797
E-mail: mbwuk@btinternet.com • Website: www.mbw.com

MBW FRANCE S.A.R.L.
Z.A. d'Outreville • 5 rue Jean Baptiste Néron • 60540 BORNEL • France
Ph: 33 (0) 3 44 07 15 96 • Fax: 33 (0) 3 44 07 41 28
E-mail: mbwfrance@free.fr • Website: www.mbw.com

ROLLER ATTACHMENTS